

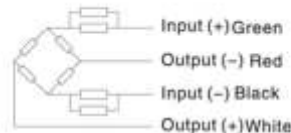
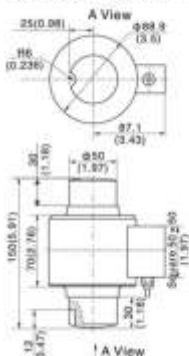


Capacity	Accuracy	Part-Number
10 t	C3	GX-LTS-13-C3-10t
20 t	C3	GX-LTS-13-C3-20t
30 t	C3	GX-LTS-13-C3-30t
40 t	C3	GX-LTS-13-C3-40t
50 t	C3	GX-LTS-13-C3-50t
10 t	C4	GX-LTS-13-C4-10t
20 t	C4	GX-LTS-13-C4-20t
30 t	C4	GX-LTS-13-C4-30t
40 t	C4	GX-LTS-13-C4-40t
50 t	C4	GX-LTS-13-C4-50t

- Stainless steel IP68 compression load cell
- Hermetically sealed
- Suitable for vehicle and hopper scales and vehicle testing facilities
- Built in surge arrestors.

Accuracy class	mV/V	OIML R60 C4		OIML R60 C3	
		2.0 ± 0.02 ¹¹			
Output sensitivity (= FS)		10, 20, 30, 40, 50		10, 20, 30, 40, 50	
Maximum capacity (E _{max})	t	4000		3000	
Maximum number of load cell intervals (n _{LC})	n _{max}	8800		12000	
Ratio of minimum LC verification interval Y = E _{max} / v _{max}	Y	TC 7778		TC 7778	
Certificate number		TC 7778		D09-05.21R1	
Combined Error	%FS	≤ ± 0.020			
Minimum dead load	t	0			
Safe overload	of E _{max}	150 %			
Ultimate overload	of E _{max}	300 %			
Zero balance	of FS	≤ ± 1.0 %			
Excitation, recommended voltage	V	5 – 12			
Excitation maximum	V	18			
Terminal resistance, input	Ω	700 ± 7			
Terminal resistance, output	Ω	700 ± 7			
Insulation impedance	MΩ	≥ 5000 (at 50VDC)			
Temperature range, compensated	°C	-10 ~ +40			
Temperature range, operating	°C	-35 ~ +65			
Element material		Stainless steel			
Ingress Protection (according to EN 60529)		IP68			
ATEX classification (optional)		II1G Ex ia II1C T4	II1D Ex iaD 20 T73°C	II3G nL IIC T4	

Outline Dimensions in mm (Inch)



Wiring:

Adopt shielded, 4 conductor cable: φ5mm
Standard cable length: 18m

Vahy Pro Nr 2013.02 Gravex GX-LTS-13 Rev 0